

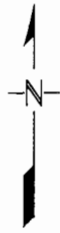
Index No. MN-9

CERTIFICATE OF LOCATION OF GOVERNMENT CORNER

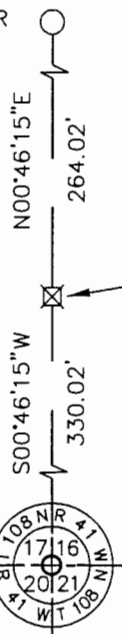
NUMBER 19 MEANDER Corner of Section 17, Township 108 N, Range 41 W
5th Principal Meridian, State of Minnesota, County of MURRAY

At the corner location shown on the sketch:

- On _____ found a _____
DATE
- left monument as found, lowered monument, removed monument (explain)
- On 12/17/03 P~~laced~~ a COMPUTED A LOST POSITION FOR CORNER
DATE



NUMBER 18 MEANDER CORNER



NUMBER 19 MEANDER CORNER
NO MONUMENT SET

MURRAY COUNTY
COORDINATE SYSTEM
NAD 1983 1986 ADJ.
N = 211374.535
E = 495321.896



BEARINGS ARE COUNTY ORIENTATION

Statement of evidence for this corner location is on back of this page.

JUNE 2004
WAS00473.00.00.01

I certify that this document was researched and prepared by me or under my direct supervision.

SIGNATURE Bruce W. Shappard DATE 6-29-04 License Number 17003
 Title: Land Surveyor Professional Engineer County Surveyor County Engineer

Meander Corner Number 19 of Section 17, Township 108 North, Range 41 West

The DNR Division of Lands and Minerals contacted the following for survey information:

Minnesota Secretary of State's Office
Murray County Recorder's Office
Murray County Highway Engineer's Office
Zieske Land Surveying, Inc. of Windom
B & G Land Surveys, Inc. of Redwood Falls
Moseng Land Surveying of Marshall
Madsen Land Surveying, Inc. of Fairmont

1854 U.S. General Land Office notes, obtained from the Secretary of State's Office, show the corner marked with a wood post in a raised mound with a pit 8 links south as per instructions.

The corner is shown:

5.00 chains (330.00 feet) North of the southeast corner of Section 17

1967 August 18, the DNR Survey Unit established the east line of Section 17 as a straight line from the southeast corner of Section 17 to the northeast corner of Section 17. No information is given about this meander corner. Monuments were set along the east line of Section 17 at the following distances north of the southeast corner of Section 17:

463.98 feet

1729.41 feet

2003 January, a Certificate of Survey in Government Lot 2 of Section 17, obtained from Zieske Land Surveying, Inc., and signed by Perry L. Zieske, LS 23008, shows monuments along the east line of Government Lot 2 but no information is given about this meander corner. The monuments are shown as follows:

A) found monument 439.92 feet north of the southeast corner of Section 17

B) set monument 992.29 feet north of the southeast corner of Section 17

C) found monument 1729.22 feet north of the southeast corner of Section 17

2003 December 17, the DNR Division of Lands and Minerals computed the lost position for corner and found it to be:

330.02 feet from the southeast corner of Section 17

4950.38 feet from the northeast corner of Section 17

Searched for and found monuments per the 1967 DNR survey and the 2003 survey by Perry L.

Zieske and found them to be:

from 0.15 of a foot west to 2.01 feet east of a straight line between the southeast and the northeast corners of Section 17

Accept the computed lost position as the location of the corner, however a monument was NOT set to mark its location.